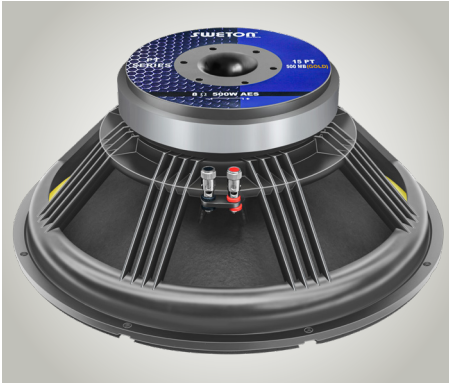


15 PT 500 MB GOLD

SWETON®



The **15 PT 500 GOLD MB** is a high-performance 15-inch, 500-watt AES-rated mid-bass transducer engineered for rich, punchy lows and crystal-clear vocal presence. Designed with a large 907.92 CM² radiating area and an efficient motor system delivering a BI of 20.55 N/A, this driver ensures tight and dynamic response across a usable frequency range of 50 Hz to 3.5 kHz.

Whether used in professional PA systems, DJ setups, or stage monitors, the 15 PT 500 MB GOLD stands out with its high sensitivity of 98 dB SPL, low distortion, and durability under extended use. This makes it an ideal choice for sound professionals seeking both performance and reliability in demanding applications.

Enclosure Recommendation

Type	Volume (Net)	Port Specs
Vented (Reflex)	80–100 litres	2 ports Ø100 mm 120 mm depth
Sealed	50–65 litres	– (tight, punchy response)

• For deep, efficient mid-bass in open areas, vented box is preferred.

• For tighter response and vocal monitoring, sealed enclosure works well.

Recommended HF Driver:

Parameter	Value
Power Handling	80–100W AES
Diaphragm	Titanium
Sensitivity	105–108 dB
Exit Size	1" or 1.4" compression

Crossover Points:

Driver	Filter Type	Frequency	Slope
15 PT 500 MB	LPF	3.0 – 3.5 kHz	12/18 dB/Oct
HF Driver	HPF	1.5 – 1.6 kHz	18 dB/Oct

No overlapping due to natural roll-off from the woofer beyond 3.5 kHz and HF starting at 1.5 kHz.

Applications:

- DJ systems
- Public address systems
- Two-way and three-way mid-bass bins
- Stage monitors (in sealed enclosures)
- Live music reinforcement

Why Choose 15 PT 500 MB GOLD?

- ● High efficiency (98 dB SPL @ 1W/1m) ensures loud output even with lower power amps.
- ● Powerful motor with BI = 20.55 N/A and high (BI/Re) = 77.94 Ns/m ensures excellent control and transient response.
- ● Solid excursion handling (5.4 mm Xmax) allows deep mid-bass extension with good SPL.
- ● Sturdy yet lightweight cone and suspension for reliable performance during long hours of operation.

15 PT 500 MB GOLD

SWETON®

SPECIFICATIONS & PARAMETERS

Specifications

Nominal Diameter	388 mm
Nominal Impedance	8 Ω
Nominal Power Handling (AES)	500 W
Program Power	1000 W
Sensitivity (1W/1m)	98 dB
Frequency Range	50-3500 Hz
Magnet Material	Ferrite
Voice Coil Diameter	77 mm (3.03 in)
Winding Material	COPPER
Former Material	GLASS FIBRE
Winding Type	OUTSIDE

Mounting Info

Overall Diameter	388 mm
Bolt Circle Diameter	373 mm
Baffle Cutout Diameter	358 mm
Depth	150 mm
Flange and Gasket Thickness	13 mm
Gross Weight	11.32 Kgs

Parameters

Resonant Frequency	Fs	49 Hz
DC Resistance	Re	5.4 Ω
Electrical Q	Qes	0.38
Mechanical Q	Qms	23.46
Total Q	Qts	0.38
Compliance Equivalent Volume	Vas	127.34 Ltrs
Peak Diaphragm Displacement Volume	Vd	0.49 Ltrs
Effective Surface Area of Cone	Sd	907.92 cm ²
Reference Efficiency	η_0	3.69%
Moving Mass including air load	Mms	97.33 gms
Motor Strength	Bl	20.55 T-m
Voice Coil Inductance	Le	0.86 mH
Efficiency Bandwidth Product	EBP	129 Hz
Voice Coil Overhang	Xmax	± 5.4 mm

Recone Kit

Recone Kit Number	REC15PT500MBG
-------------------	---------------

Z(f,x=0) Impedance

